

# Client Closet



WELCOME TO LIFE'S MAGICAL MOMENTS PHOTOGRAPHY CLIENT CLOSET GUIDE. MOST OF THE DRESSES CAN BE WORN FOR PREGNANT AND NON PREGNANT MUMMAS. I DO HAVE A SECTION AT THE END FOR JUST MY MATERNITY ONLY GOWNS, & A VERY SMALL BUT YET GROWING SELECTION FOR DADS.





### CREAM RUFFLE DRESS

THIS DRESS CAN BE WORN ON AND OFF THE SHOULDERS. VERY LONG DRESS HAS ALOT OF FLOW WITH A SPLIT ON THE SIDE, & PLENTY OF ROOM FOR A BUMP. NEEDS SLIP UNDERNEATH ( I HAVE A CREAM ONE AVAILABLE ) PERFECT FOR STUDIO & LOCATION SESSIONS  
**SIZE - 10-18**  
CAN BE TIGHTEN AT THE BACK FOR SMALLER SIZES.

### BROWN RUFFLE DRESS

THIS DRESS CAN BE WORN ON AND OFF THE SHOULDERS. VERY LONG DRESS HAS ALOT OF FLOW WITH A SPLIT ON THE SIDE, & PLENTY OF ROOM FOR A BUMP. WITH LONG FLOWY ARMS NEEDS SLIP UNDERNEATH ( I HAVE CREAM & RUST ONES AVAILABLE ) PERFECT FOR STUDIO & LOCATION SESSIONS  
**SIZE - 10-20**  
CAN BE TIGHTEN AT THE BACK FOR SMALLER SIZES.



### RUST RUFFLE DRESS

THIS DRESS CAN BE WORN ON AND OFF THE SHOULDERS. VERY LONG DRESS HAS ALOT OF FLOW WITH A SPLIT ON THE SIDE, & PLENTY OF ROOM FOR A BUMP. NEEDS SLIP UNDERNEATH ( I HAVE A RUST ONE AVAILABLE ) PERFECT FOR STUDIO & LOCATION SESSIONS  
**SIZE - 10-20**  
CAN BE TIGHTEN AT THE BACK FOR SMALLER SIZES.







### Cream Dress

off the shoulder beige dress. has plenty of room for a growing bump too, it had plenty of flow to it too

Perfect for studio & location sessions  
sizes 10-14



### Cream & Brown Checkered Dress

this dress has some stretch around the top part, great summer dress and can add layers over it for cooler months

Mainly a dress for family sessions, could wear for maternity if the bump is on the smaller side would need to try on first tho to make sure.  
sizes 10-12



### White Sheer Dress

this dress is more of a free flowing dress, great is you don't want a dress that hugs you. Has a dual shorter layer underneath. Can be worn in both studio & location sessions  
sizes 12-16







**LONG BROWN STRAPLESS DRESS**

**THIS STRAPLESS DRESS IS GREAT FOR THE HOTTER MONTHS BUT CAN EASY ADD LAYERS FOR COOLER MONTHS. HAS ABIT OF A STRETCH. CAN BE WORN IN STUDIO OR ON LOCATION  
LOCATION  
SIZE -12-14**



**RUST LONG DRESS WITH LONG SLEEVES**

**LONG SLEEVE DRESS WITH SPLIT DOWN THE SIDE, HAS A GOLD SHIMMER TO IT. PERFECT FOR LOCATION SESSIONS BUT CAN BE WORN IN STUDIO TOO  
SIZES 10-12**



**Rust Dress**

**Rust thin strap dress its not tight fitting around the belly allowing room for a bump too. This dress has a built in bralette  
Size 10-12 small size 14**





### Olive Green Off The Shoulder Dress

The dress can be worn off the shoulder or on the shoulder. perfect for maternity or family photos and for both studio and location sessions  
Sizes 12-14



### Dark Green Off The Shoulder Dress

off the shoulder dress. has plenty of room for a growing bump too, has flow to it and long sleeves. Perfect for studio & location sessions sizes 10-12 or a small size 14



### Light Green Dress

Off the shoulder or on the shoulder dress. Has some stretch to it making it perfect for Family and Maternity Sessions for studio or location sessions  
size 18-22







### LONG BUTTON UP SO DREAMY DRESS

FEATURING A PLUNGING NECKLINE,  
BUTTONS DOWN THE FRONT AND  
ELASTIC SHIRRING AT THE BACK, IT'S  
SUCH A COMFORTABLE AND VERSATILE  
PIECE. CAN BE WORN IN STUDIO OR ON  
LOCATION  
SIZE -12-14



### BOHO PLEATED CHIFFON ON THE SHOULDER DRESS

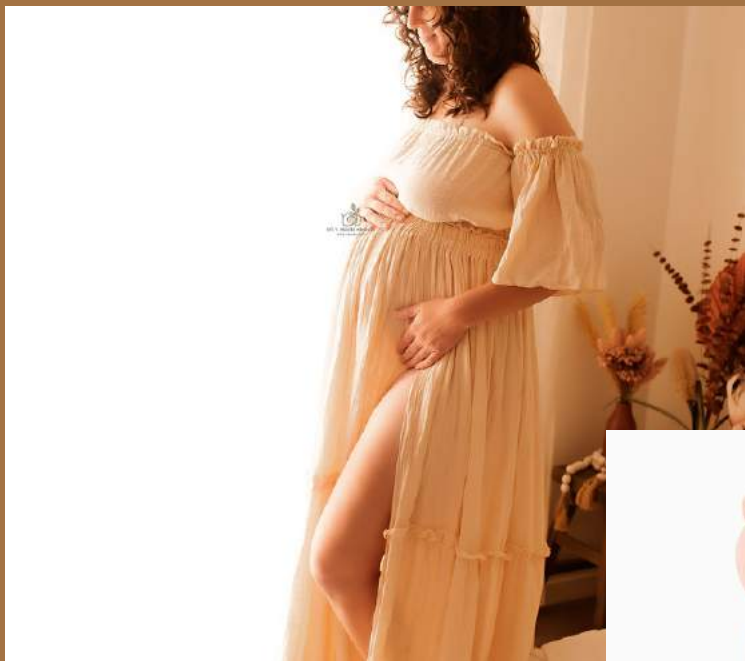
LONG SLEEVE BOHO PLEATED  
CHIFFON OFF THE SHOULDERS  
DRESS WITH A SPLIT UP THE SIDE.  
PERFECT FOR PREGNANT & NON  
PREGNANT MUMMAS  
PERFECT FOR LOCATION SESSIONS  
BUT CAN BE WORN IN STUDIO TOO  
SIZES 10-18



### Ruffle Pleated Dress Boho Gown Beige Long Sleeve Dress

Ruffle Boho dress its not tight fitting with  
long flowing sleeves with a split up the side  
as well allowing room for a bump too.  
Perfect for pregnant & non pregnant  
mummas.  
Can be worn for both location & studio  
sessions  
Size 10-18





### CREAM TWO PIECE SET

THIS TWO PIECE SET IS STUNNING, IT CAN BE WORN AS A TWO PIECE OR CAN PULL THE SKIRT UP TO THE TOP AND IT CAN BE WORN AS A ONE PIECE. IT'S SUCH A COMFORTABLE AND VERSATILE PIECE. CAN BE WORN IN STUDIO OR ON LOCATION. FOR PREGNANT & NON

PREGNANT MUMMAS  
SIZE -10-18



### WHITE TWO PIECE SET



LONG SLEEVE BOHO 2 PIECE SET. SKIRT WITH A SPLIT UP THE SIDE. CAN BE WORN AS A ONE PIECE AS WELL & CAN USE THE TOP WITH ANOTHER SKIRT OR THE SKIRT WITH ANOTHER TOP. TOP CAN BE TIED UP AT THE FRONT OR THE BACK. PERFECT FOR PREGNANT & NON PREGNANT MUMMAS PERFECT FOR LOCATION SESSIONS BUT CAN BE WORN IN STUDIO TOO SIZES 10-16



### Ruffle Pleated Dress Boho Gown Caramel Long Sleeve Button Up Dress

Ruffle Boho dress its not tight fitting with long flowing sleeves with buttons up the front so you can have as many or as little buttons done up as you like. as well allowing room for a bump too. Perfect for pregnant & non pregnant mummas.

**COMING SOON!!!**

Can be worn for both location & studio sessions  
Size 10-20





### Light Brown Off The Shoulder Dress

this dress can be worn off or on the shoulder, does have some stretch to it allowing room for a bump. Can be worn for studio & location sessions sizes 10-14



### Rust Wrap Dress

This dress is a wrap dress so it does a range of sizes, its beautiful for both Maternity and Family shots, its more of a location dress but could be worn in studio also sizes 12- 16.



### Burnt Orange Dress

this dress is more of a free flowing dress, great is you don't want a dress that hugs you. plenty of room for your growing belly Can be worn for a location or a studio session sizes 12- 16.







### Red Dress

this dress can be worn off or on the shoulder, does have some stretch makes it perfect for family and maternity & for both location and studio sessions  
sizes 10-14



### Yellow Dress

this dress can be worn off or on the shoulder, does have some stretch makes it perfect for family and maternity & for location sessions  
sizes 10-12



### Blue Dress

Long sleeve dress is button up at the front more of a tighter fit up top and free flowing from the belly down. Perfect for location sessions and a smaller bump  
Sizes 16-18



# Dad's



Khaki Shirt  
Men Solid Ribbed Knit Tee

sizes XXL



Chocolate Brown Shirt  
Men Curved Hem Tee

sizes XL



White Shirt  
Mens plain white shirt x 2

sizes XL & XXL



Green Ribbed Knit Shirt  
Mens green shirt x 2

sizes M & XXL



# Maternity



## Lace Gown

Lace dress knee high, comes in Black and a White. Can be worn in studio or on location.

Size -10-14 or small 16



## Strapless Gown

Strapless dress, is more of a fitted dress to really show off the bump, has a sheer layer on the back. Available in dark red or royal blue.

Can be worn in studio or on location.  
Size -10-14



## Strapless Tie-Up Gown

Strapless tie-up at the back dress, with a split at the front to showcase your bump. Available in black or white

Can be worn in studio or on location, but will need a non busy location as they are sheer

Size -10-16



## Fitted long sleeve white Gown

Fitted white gown, no split perfect to show off your bump but can fully cover it.

Can be worn in studio or on location.  
Size -10-14





# Maternity



## Strapless Gown

Strapless dress, is more of a fitted dress to really show off the bump, has a sheer layer on the back. Available in dark red or royle blue.

Can be worn in studio or on location.  
Size -10-14



## Brown & Beige Open Belly Strapless Gown

This gown ties up at the back and has an open front to expose your growing belly but can be placed to cover your belly if not wanting it exposed. also comes in white and black. Maternity dress only sizes 10-18



## Brown Top & White Skirt

Brown crop top & white skirt great for exposing that baby bump  
sizes 10-14



## White long train gown Maternity Gown

this gown is strapless with halter strap as well. it is a full gown does not expose the belly, has a long train great for the throwing the train/dress shots sizes 10-small 16.





# Maternity



## Strapless Gown

Strapless dress, is more of a fitted dress to really show off the bump, has a sheer layer on the back. Available in dark red or royle blue.

Can be worn in studio or on location.  
Size -10-14



## Blue Long Sleeve with tutu skirt Gown

This gown makes you look like a princess and we can dress it up with flower crowns. Has tutu skirt at the bottom. Maternity dresses only  
Also comes in Yellow  
sizes 10-14



## Red Open Belly Strapless Gown

This gown ties up at the back and has an open front to expose your growing belly but can be placed to cover your belly if not wanting it exposed. also comes in white and black.  
Maternity dress only  
sizes 10-18



## Yellow Long Sleeve with tutu skirt Gown

This gown makes you look like a princess and we can dress it up with flower crowns. Has tutu skirt at the bottom.  
Maternity dresses only  
Also comes in Blue  
sizes 10-14

